



JIMMY FAIRLY LAB DRIVES EFFICIENCY AND SUSTAINABILITY WITH SATISLOH'S E-TICKET SYSTEM

When Jimmy Fairly's Director of Lab Operations, Manuel Gonçalves, first joined in 2018, his mission was clear: create an efficient, high-quality assembly lab to support the company's growing demand for stylish, responsibly produced eyewear. Since the lab's launch in 2019, it has rapidly scaled, now assembling 1,400 items daily to support over 148 boutiques across Europe. However, as demand grew, so did the need for innovation to streamline lab processes and enhance sustainability. That's when Manuel turned to Satisloh's E-Ticket System.

Having maintained a strong connection with Satisloh since 2018, Manuel discovered the E-Ticket solution during a period of organizational change in late 2023.

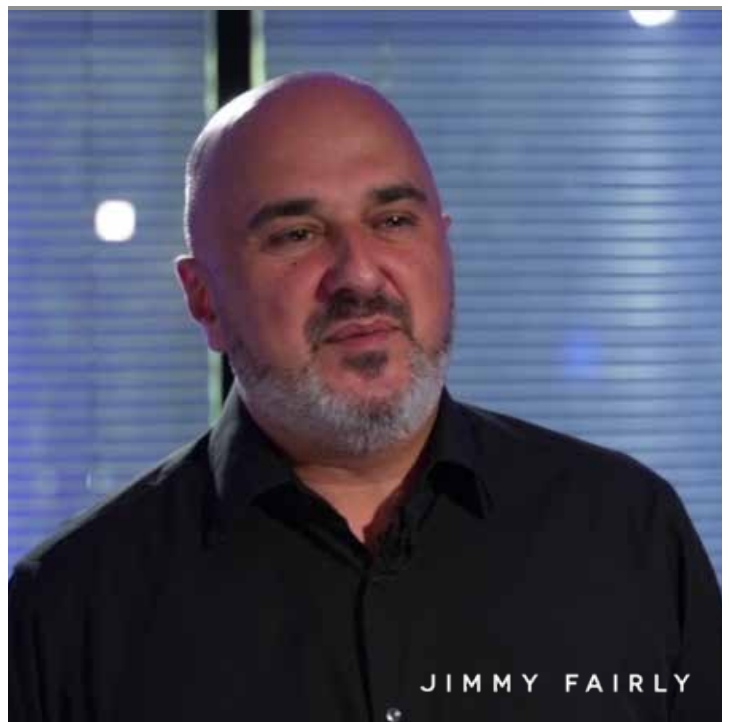
"We were in the middle of an ERP and WMS change. Printing job tickets was coming back to the lab, meaning we would need an extra person for a non-value-added task. That's when Xavier Bultez Satisloh VP Integrated Solutions introduced me to the E-Ticket System."

- Manuel Gonçalves

The timing was ideal, and by April 2024, Jimmy Fairly Lab fully integrated Satisloh's E-Ticket.

A SWIFT, SEAMLESS IMPLEMENTATION

Satisloh's team provided hands-on support throughout the three-week integration period, enabling a quick and disruption-free rollout. The setup was smooth,



Manuel Gonçalves, Director of Lab Operations at Jimmy Fairly

with no impact on production. The Satisloh E-Ticket team was on board every step of the way, ensuring our templates and workflow matched our needs exactly.

The system's flexibility and compatibility with the lab's LensWare Software were pivotal to its success.

After reviewing production orders and job ticket information, Jimmy Fairly Lab customized the E-Ticket templates to only display essential information, eliminating excess data and improving efficiency on the shop floor.

SUSTAINABLE AND COST-EFFECTIVE GAINS

With the switch to paperless job tickets, Jimmy Fairly Lab reduced its annual paper consumption by approximately 800,000 sheets, a figure that would have only increased with the company's growth.

"We've practically eliminated paper. The environmental impact is profound, and it's also more cost-effective."

- Manuel Gonçalves



PRODUCTIVITY AND CUSTOMER SERVICE WINS

Implementing the E-Ticket has optimized productivity, saving the lab the equivalent of two full-time roles. The investment paid off in just nine months, with significant benefits in workflow and order prioritization.

"The E-Ticket has been completely transparent for our production team. Urgent orders are now easier to track, making it much simpler to expedite them and respond to customer needs more efficiently."

- Manuel Gonçalves



A RELIABLE SOLUTION FOR SCALING LABS

The E-Ticket system has seamlessly integrated into Jimmy Fairly's processes, proving to be both reliable and user-friendly. "With WiFi and a stable server, the E-Ticket just works," Manuel notes. "What's impressive is the transparency for employees-our team adapted immediately without questions or concerns."

Reflecting on the integration, Manuel advises future adopters to focus on defining essential information for job tickets.

"We reviewed what we actually needed on our production orders and created tailored templates. That's what makes the E-Ticket so successful for us it's streamlined to deliver exactly the information we need, nothing more."

- Manuel Gonçalves



800,000 Sheets Paper Saved Per Year

Gain Equivalent to 2 Full-Time Positions



Investment Paid Off in 9 months

Jimmy Fairly Lab's partnership with Satisloh is a testament to the brand's commitment to sustainability, efficiency, and customer satisfaction, delivering responsible and fashionable eyewear with precision and care.

satisloh[®]