

SPRING 2025 RELEASE

MES-360

SPRING 2025 RELEASE HIGHLIGHTS

Release date: April, 2025

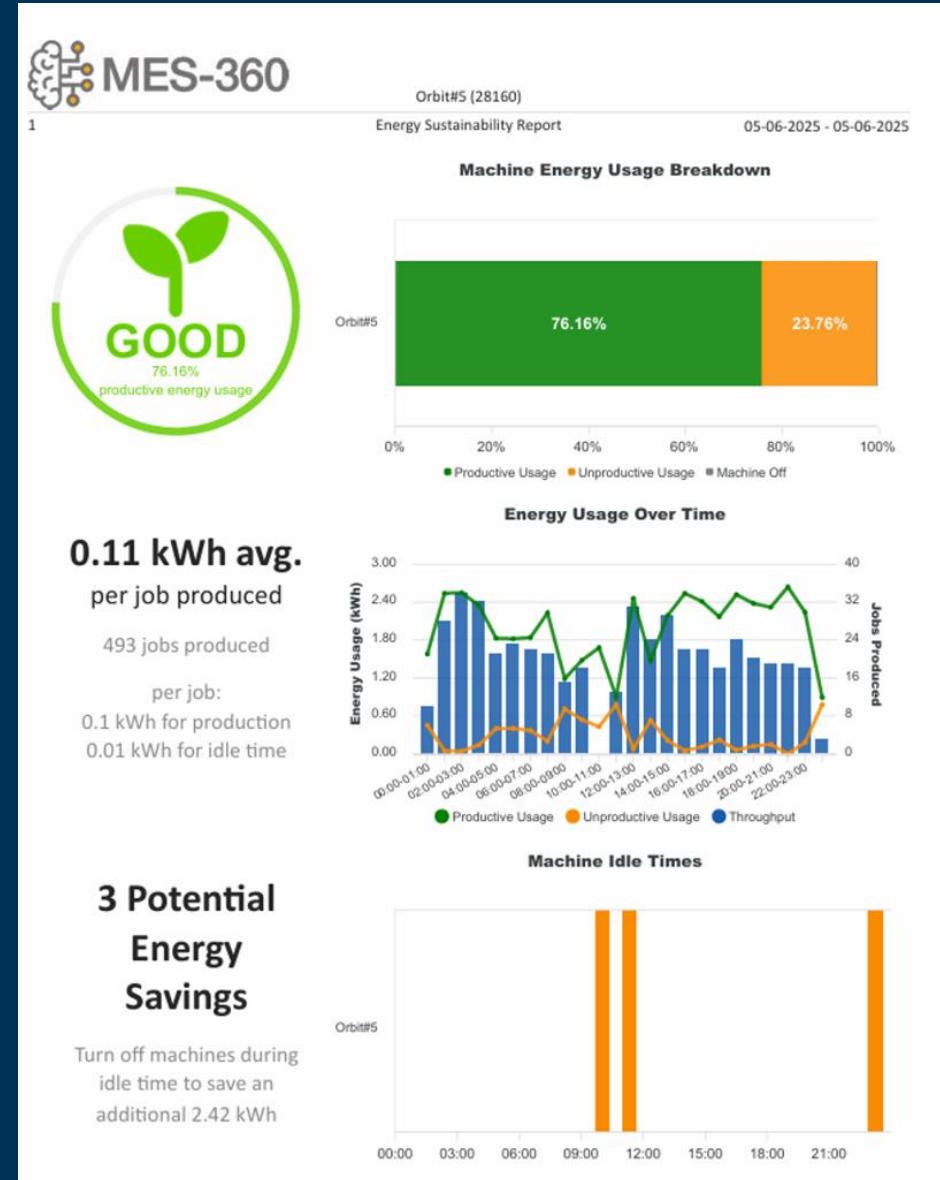
SPRING 2025 RELEASE

Machine Monitoring

Energy Consumption Report

Add power consumption machine report which MES360 will provide recommendations to help to make the power saving

Supports your lab for continues sustainability!



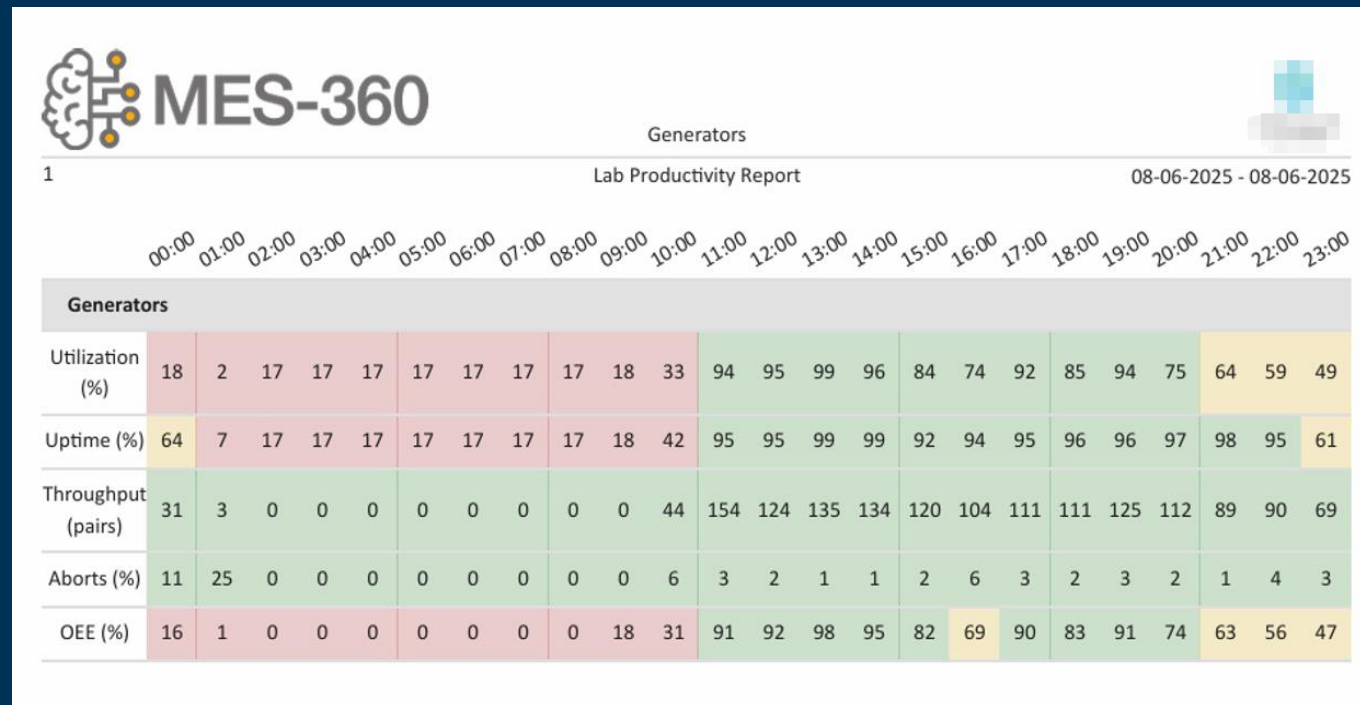
SPRING 2025 RELEASE

Machine Monitoring

Lab productivity Report

Easily to review the daily productivity by hour with machine uptime, utilization and aborts to have overall machine OEE

Help the lab to improve the OEE and increase the productivity!



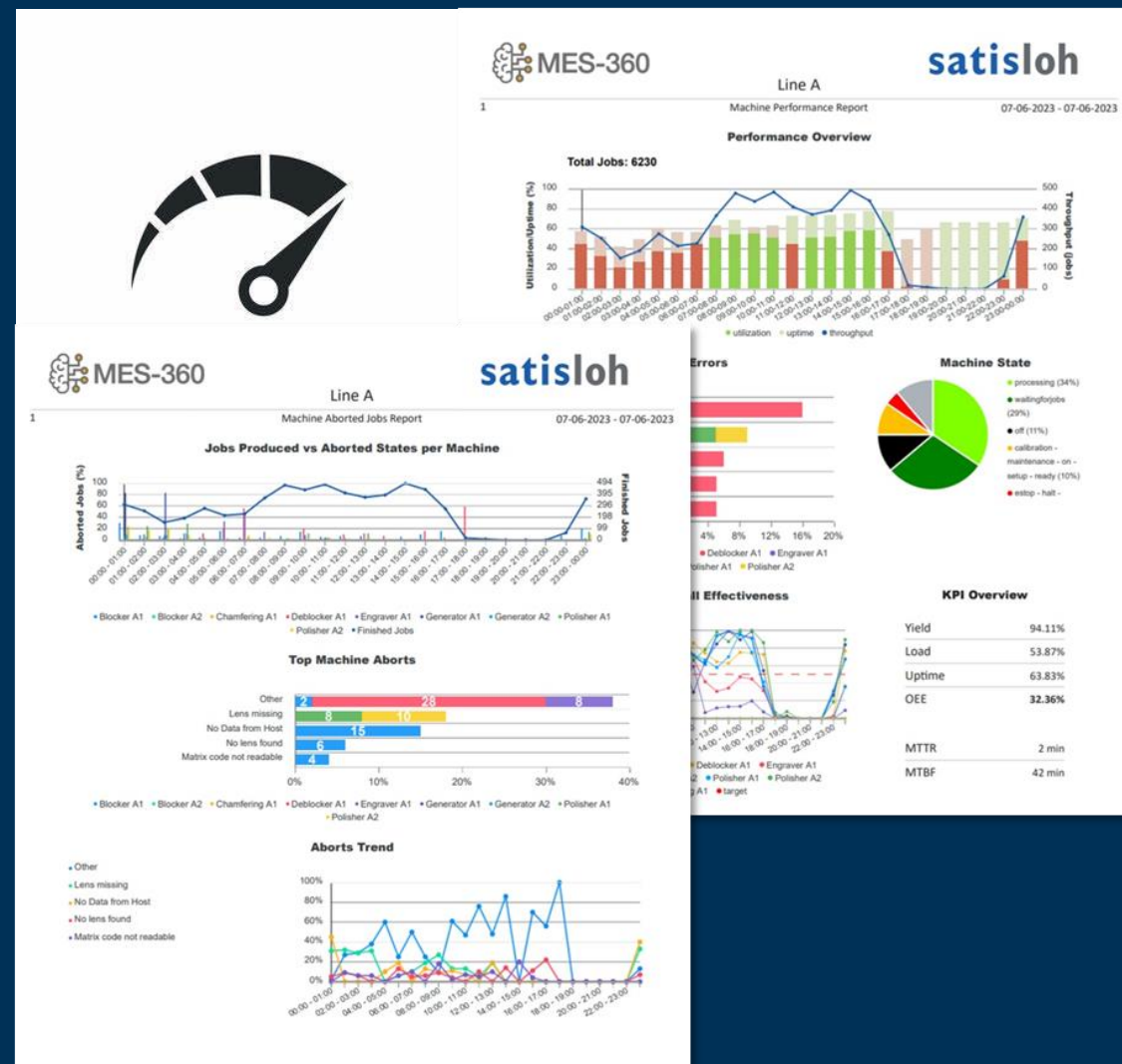
SPRING 2025 RELEASE

Machine Monitoring

Reports Generating Performance

Add more index to drastically speeding up the reports generating with up to 50% time saving.

Reduced the server memory consumption when running the report which improve the server performance

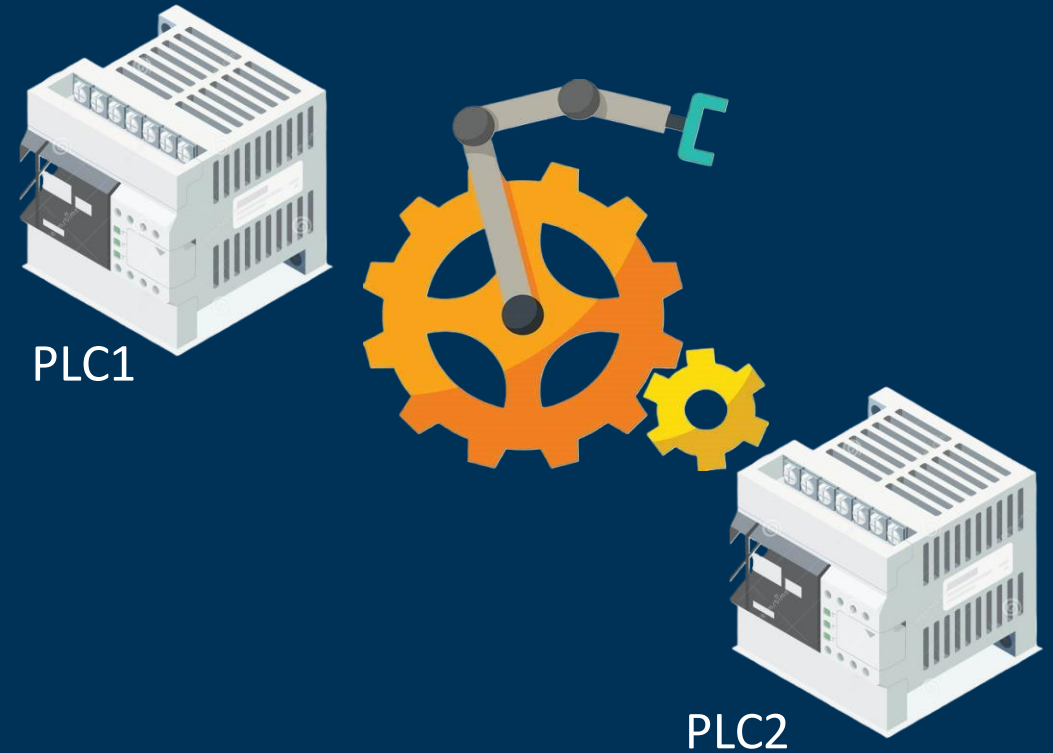


SPRING 2025 RELEASE

Conveyor Routing

Support multiple-PLC unit

MES360 is able to support multiple different brand of PLC to better balance the automation and avoid the single point failure!



SPRING 2025 RELEASE

Conveyor Routing

New Device Control Available!

Can control multi-level vertical elevator, the tray can go in/out from different levels via elevator.

This control feature gives more options to route different kind of jobs!



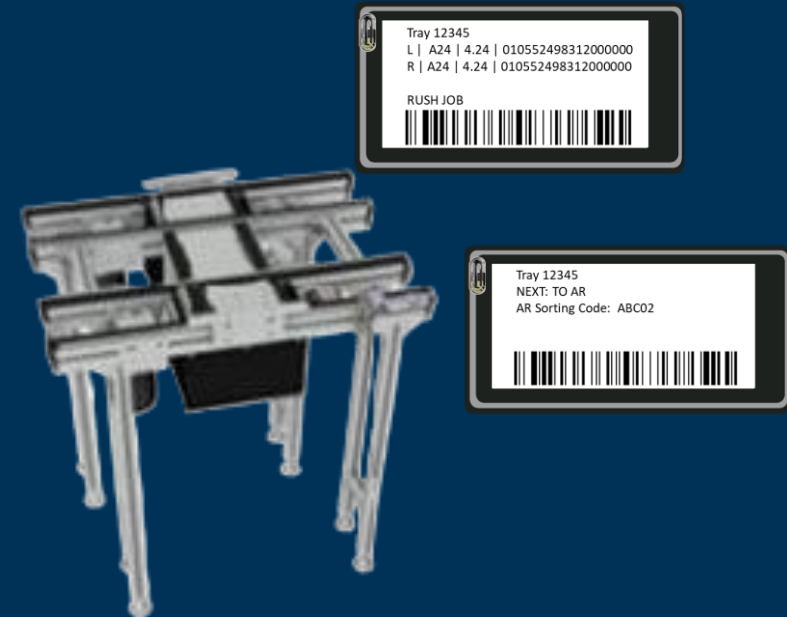
SPRING 2025 RELEASE

Conveyor Routing

Integrated Conveyor Control with E-Ticket

MES360 can control conveyor to trigger the E-ticket template change

Save workload of manual scanning for template change when using conveyor routing of MES360!



SPRING 2025 RELEASE

E-Ticket Manager

New 'HOT' jobs displaying template

MES360 replaced 'hot job' LED blinking feature to a special on-screen template options, e.g, red background on E-ticket

It will be easy for operators to identify the hot jobs and saving the battery power to up to 3 years!

