

SUMMER 2025 RELEASE

MES-360

Summer 2025 RELEASE HIGHLIGHTS

Release date: Sep, 2025

SUMMER 2025 RELEASE

Machine Monitoring

Consumables Status Dashboard

Display multiple machines' consumables and their remaining lifespan as a %.

Supports your lab for better consumables tracking!

Consumable (VFT & Multi-FLEX)

	Cell 1 Front	Cell 1 Rear	Cell 2 Front	Cell 2 Rear	Cell 3 Front	Cell 3 Rear	Fast Tool 1	Fast Tool 2	Milling Tool	Cribbing Tool	Engraving Tool
Polisher-A2 (39204)	72	94	76	92	45	51					
Polisher-A1 (39195)	97	78	35	80	35	74					
Generator-A2 (28277)							99	51	98		
Generator-A1 (28278)							1	98	23		

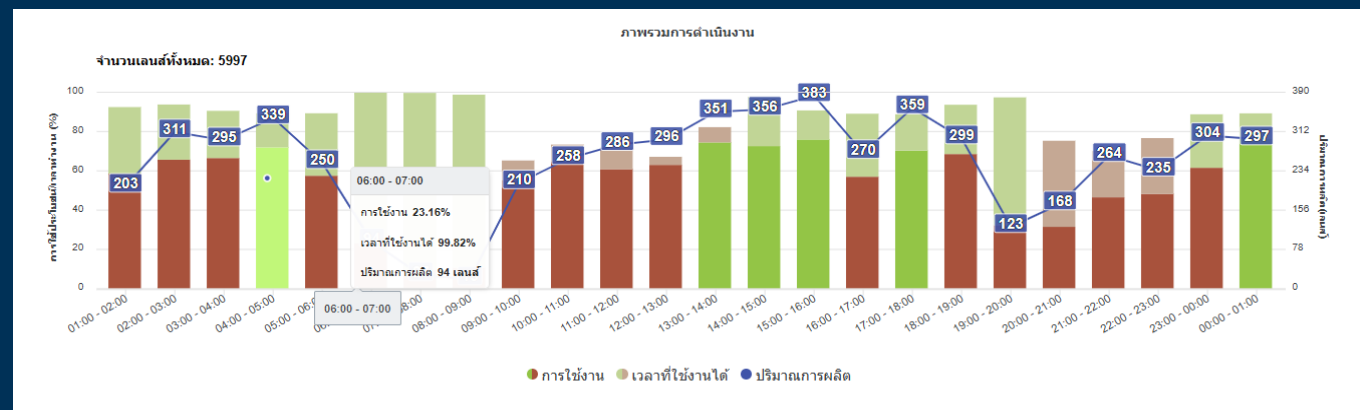
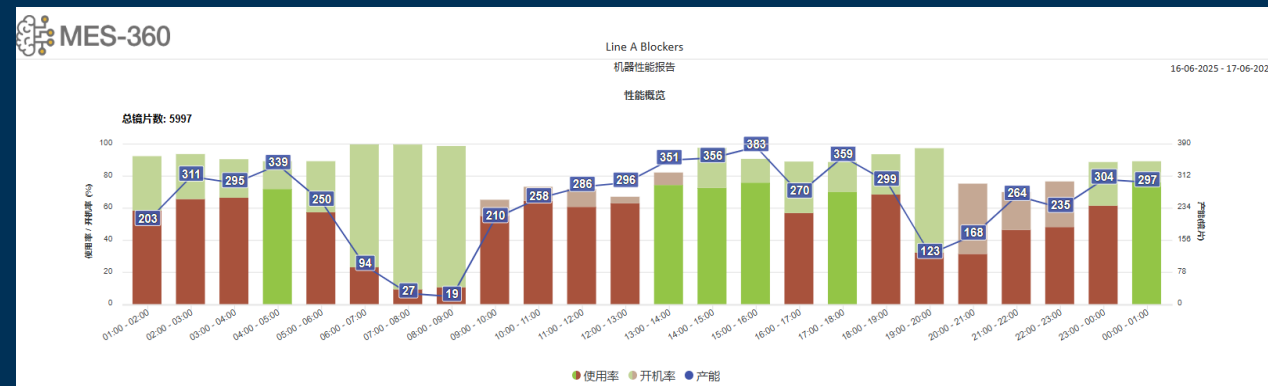
	Fast Tool 1	Fast Tool 2	Milling Tool	Cribbing Tool	Engraving Tool
Generator-A6 (28148)	2	0	76		
Generator-A5 (28250)	32	99	2		
Generator-A4 (28240)	29	0	77		
Generator-A3 (28276)	22	0	77		
Generator-A2 (28277)	99	51	98		
Generator-A1 (28278)	1	98	23		

SUMMER 2025 RELEASE

Machine Monitoring

Running reports for a specific shift
&
Thai and Chinese is available for
report/dashboard

Multiple languages and specific shift-period
supported for better understand your lab
productivity!



Report Type
Machine Performance Report

Shift

Range
Hour by Hour

Period Start
August 20th 12:00 am

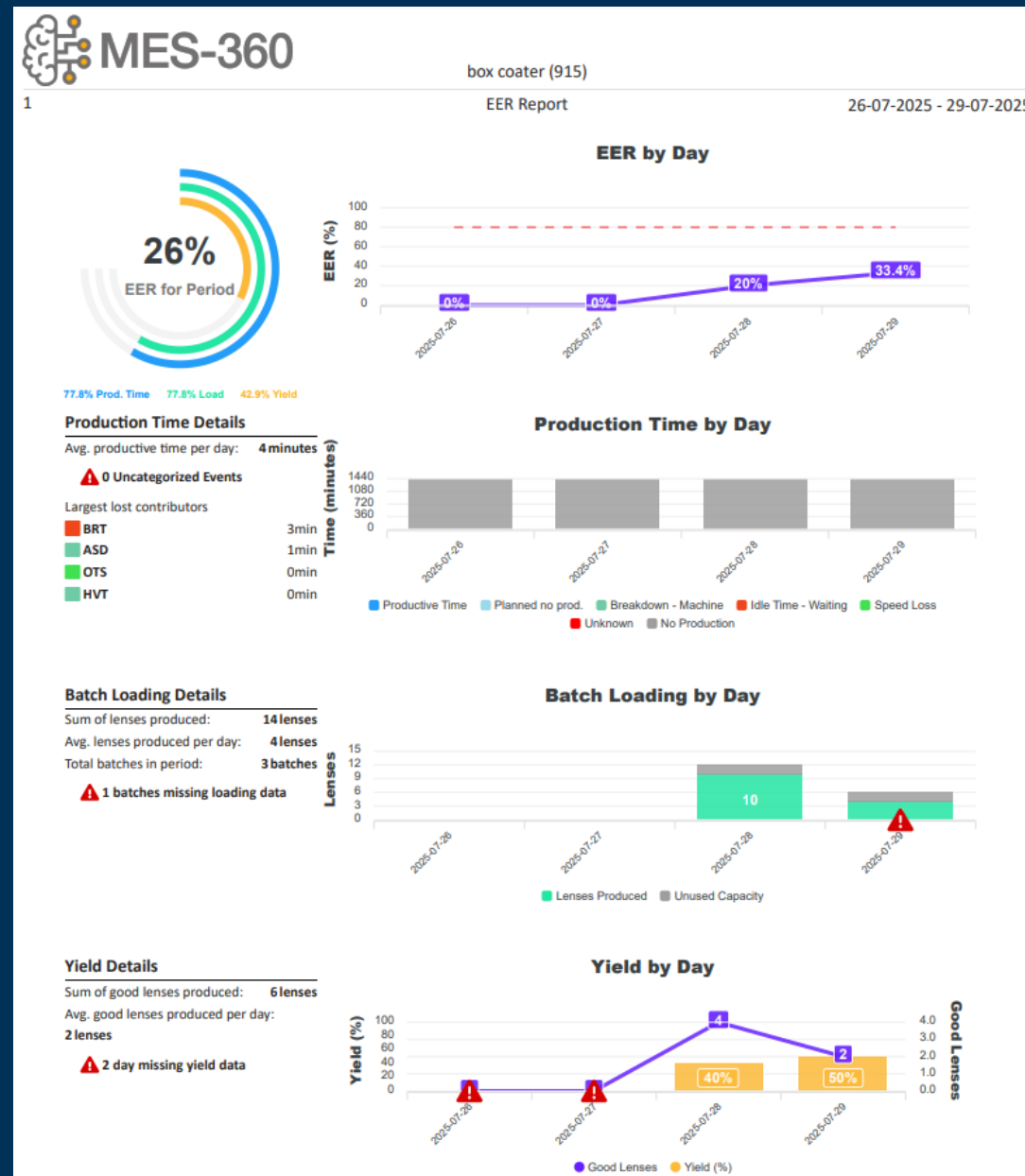
Period End
August 20th 11:59 pm

SUMMER 2025 RELEASE

Machine Monitoring

New EER Report specified for Satisloh Box-coaters

By using box-coater door open/close monitoring feature for tracking the box-coater performance!



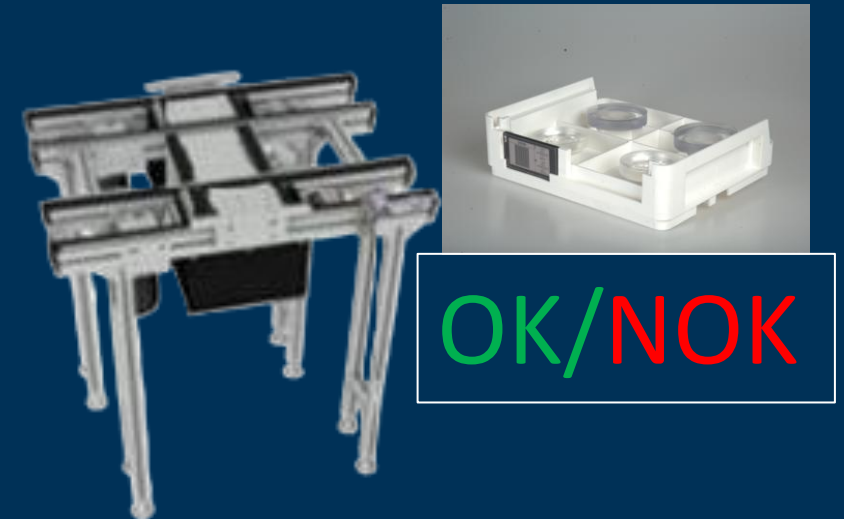
SUMMER 2025 RELEASE

Conveyor Routing

Integrated Conveyor Control with Inspection Machines

MES360 can control conveyor to route jobs based on job inspection results.

Help you to improve the production yield !



APPENDIX

Release Note Details

Module	New Release
Rx-Alerting	1.3.3
Rx-Dashboard	1.26.0-satissummer2025.6
Rx-Data	1.12.12
Rx-EER	1.7.4
Rx-Hub	1.26.0-satislohsummer2025.1
Rx-Link	1.5.7
Rx-Paperless	1.11.15
Rx-PDF	1.27.0.satislohwinter-2024.2
Rx-Routing	3.8.10
Rx-Reports	1.27.0-satislohsummer2025.12
Rx-Scanners	1.10.5
Rx-Workstations	1.27.0-satislohwinter2024.0

2025 SUMMER RELEASE NOTE

Complete Change List

Rx-Hub

OTHER:

- Added Thai and Chinese language to application settings

Rx-Alerting

BUG:

- Resolved if one or more machine has no job state, the time sync alert would no longer function

Rx-Dashboard

FEATURE:

- New dashboard to track consumable current status

OTHER:

- Dashboards can now be displayed in Thai
- Dashboards can now be displayed in Simplified Chinese
- Dashboard refresh time is no longer a free-form text field but instead offers specific refresh options

2025 SUMMER RELEASE NOTE

Complete Change List

Rx-Data

BUG:

- Resolved Job Machine run can be invalid if two job states occur almost at the same time
- Resolved data for EER report yields no data for days in between start and end date
- Resolved planned production time was incorrectly applied when one or more shifts were happening without any gap

OTHER:

- CSV exports now default to a maximum in-memory size of 4gb. If the export exceeds this threshold, the export is halted
- Consumable parameters are now case-insensitive
- CSV now correctly only try to generate themselves once
- Box Coater EER events are missing a database index for the 'time' column, reducing query speed
- Optimized the query for the 'Job Process Parameter' data view, increasing page load by up to 10x
- Push targets no longer build the target payload when the endpoint is disabled, greatly improving machine interface save time when push targets are enabled

2025 SUMMER RELEASE NOTE

Rx-Reports

FEATURE:

- Lab productivity report can now be ran for specific shifts
- Machine performance report can now be ran for specific shifts
- Machine OEE report can now be ran for specific shifts
- New AR-EER report for Box Coaters

BUG:

- Resolved 'use planned production time' setting is not saved on custom reports
- Resolved updating scheduled reports would sometime break the report entirely
- Resolved scheduled OEE report do not use targets defined in the custom report
- Resolved broken custom reports can stop the email scheduler from sending any email report
- Resolved Custom Report configuration is timezone sensitive
- Resolved Lab Productivity report would fail if planned production time was enabled but no shift configured
- Resolved Machine Performance report would fail if planned production time was enabled but no shift configured
- Resolved scheduled report sometimes shows report loading page instead of the report
- Resolved scheduled report always sends for the report start time (does not consider offset)

OTHER:

- Removed erroneous toolbar on OEE report graphs
- Reports can now be displayed in Thai
- Reports can now be displayed in Simplified Chinese
- OEE Report graphs now show which machine is the responsible for the minimum-maximum in the report web view
- Graphs on the OEE report now all have a precision of 1 decimal point
- Average Yield value on EER report now rounds to nearest full lens

2025 SUMMER RELEASE NOTE

Complete Change List

Rx-Routing

FEATURE:

- Inspection results from Theia can now be used for routing

BUG:

- Resolved default definition for V1 & V2 has incorrect I/O mapping
- Resolved Job States with duration of less than <10ms are counted as having the same time
- Resolved 'Started' and 'Aborted' with the same timestamp can be improperly processed
- Migration to version 3.8.4 fails on postgres
- Resolved Job Workstation would sometime scan the result of the previous scan

OTHER:

- E-Ticket template change now trigger based on last set template instead of decision point visit
- Added some missing FK dependencies for order data that could result in orphan data.

2025 SUMMER RELEASE NOTE

Complete Change List

Rx-Paperless

BUG:

- Resolved launching E-tickets using data from Rx-Data is impossible due to missing 'JOB' tag
- Resolved 'Order Number' column is blank on 'Find My Order' transactions.
- Resolved 'Add Tag Data Source' migration not working on fresh installs

OTHER:

- Custom tags can no longer be created for system-predefined tags

2025 SUMMER RELEASE NOTE

Complete Change List

Rx-EER

OTHER:

- Batch ID in the Events table now supports partial match
- AR-EER Events can now be edited with the correct user permissions
- Lost codes have been revisited to be easier to use: hidden 'grouping' has been removed and it is now possible to give a display name to loss codes for localization