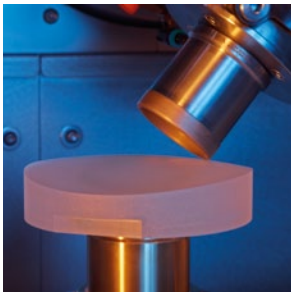
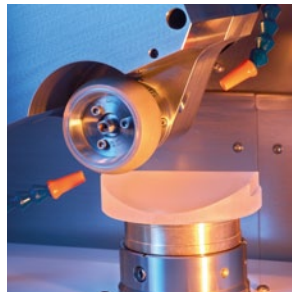


SPM/SPS-200

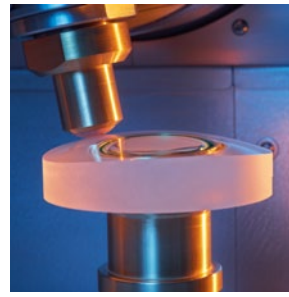
GRINDING AND POLISHING OF SPHERES, ASPHERES
AND FREEFORMS



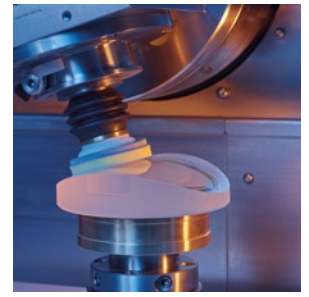
Grinder with 2, 3 and 4 tools available (cup-wheel mode shown)



Asphere and freeform grinding with horizontal spindle



Adaptive Aspheric Polishing Tool (ADAPT), also with dual spindle (2-step polishing)



Various polishing process solutions

FEATURES + BENEFITS

Flexibility

- Modular machine design meeting your specific needs
- One for all: processes spheres, aspheres, and freeform surfaces as well as edges, chamfers and many other processes
- Extended Y-axis and various spindle combinations enable maximum process flexibility on grinder and polisher

Efficiency

- Unique dual tool spindle technology, additional horizontal spindle or up to two dual tool spindles save setup times and allow multiple processes without retooling
- Grinding in disc and cup-wheel mode enables cost-effective production
- Integrated dressing spindle on polisher



Reliability

- High stability through unique and proven polymer concrete base and vibration damping machine feet
- Highly precise through direct driven and water-cooled spindles and axis.
- 3D process simulation for high process safety
- Air bearing workpiece spindle (optional) for excellent surface finish on grinding process
- Integrated quality control system compensates inaccuracies caused by tool wear

Ease of use

- Easy and convenient job setup via Satisloh guided user interface BaSyS
- Ergonomic machine design for convenient operating and fast and easy maintenance

OPTIONS + ACCESSORIES

- Different software modules
- ADAPT (Adaptive Deterministic Aspherical Polishing Technology)
- Center thickness control and form verification (OMM-touch)
- Measuring system for sagittal height
- Chiller, coolant and slurry systems
- Diamond tools, receptions, holders and consumables
- Spherometer rings

TECHNICAL INFORMATION

Dimensions (w x d x h) 1200 x 1850 x 1970 mm (47 x 73 x 78 in)

Working range

SPM-200:

- spherical \varnothing 10-200 mm (up to 300 mm with restrictions)
- aspherical \varnothing 10-300 mm

SPS-200:

- spherical \varnothing 10-120 mm (up to 140 mm with restrictions)
- aspherical \varnothing 10-300 mm

CONTACT

Satisloh AG
Neuhofstrasse 12
CH - 6340 Baar
Switzerland
Phone: +41 (0) 41766 16 16
Mail: info@satisloh.com

www.satisloh.com

North America

Europe

Asia

Middle & South America

Sales
Phone: +1 262 255 6001
Email: precision@satislohusa.com
Phone: +49 (0) 6441 912 0
Email: info.de@satisloh.com
Phone: +852 27 56 7654
Email: info.asia@satisloh.com
Phone: +55 (24) 2233 8600
Email: info.latam@satisloh.com

Service
+1 800 866 5640
precision@satislohusa.com
+49 (0) 6441 912 555
service.de@satisloh.com
+852 27 56 5058
service.asia@satisloh.com
+55 (24) 2233 8686
servicio.latam@satisloh.com

satisloh®