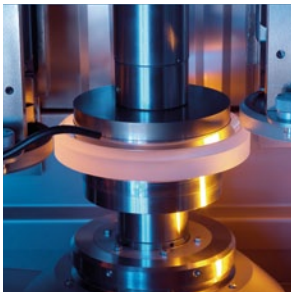


# C-300

---

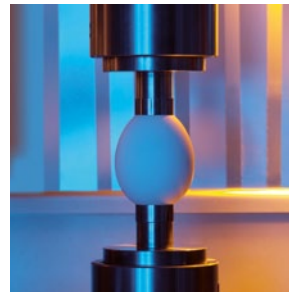
HIGH PRECISION 7 AXIS CENTERING MACHINE



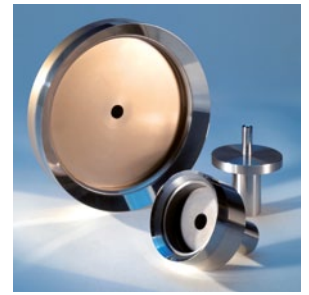
High precision centering for  
Ø 10-300 mm



Processes even non-circular  
lenses with high precision



Extra sensitive clamping



Various centering bells available

## FEATURES + BENEFITS

### Flexibility

- Processes various steps and contours all in one machine
- Modular, upgradeable machine design meeting your specific needs
- Voice-coil technology allows dynamic movements with extremely precise force control at the same time for sensitive and highest accuracy at the centering clamping process.
- Processes even non-circular shapes with optional form shaping grinding

### Efficiency

- Processes various geometries with almost no tool exchanges
- 2 tool spindles moving independently for faster processing and shorter cycle times
- Multi-chamfering capability saves time
- Extremely precise linear motors and direct drive tool spindles provide edge processing at highest speed and best surface quality
- Innovative force grinding reduces processing times and minimizes tool strain for longer service life



### Reliability

- Repeatable position accuracy of 0.001 mm guarantees precise and repeatable results
- Graphical simulation mode for superior process safety
- High stability through unique and proven polymer concrete base and vibration damping machine feet
- Excellent surface quality through best torsion stiffness and vibration-free high cutting speed

### Ease of use

- Easily accessible working chamber simplifies maintenance and cleaning
- Class 1 laser source so no safety goggles are required
- Unique clamping system with pneumatic weight balancer compensates for the differing weights of centering bells
- Air bearing spindle without seals eliminates wear, friction, and start-up resistance

## OPTIONS + ACCESSORIES

- Automatic loading system HS-200 for lenses up to Ø 80 mm
- Automatic center thickness compensation
- Laser alignment system, also for reflective optics
- Form shaping software for non-circular workpiece shapes
- Coolant system
- Chilling system for axis
- Sintered diamond tools, carbide centering bells and consumables

## TECHNICAL INFORMATION

<b>Dimensions (w x d x h)</b>	1200 x 1850 x 2300 mm (47 x 73 x 91 inches)
<b>Working range</b>	Diameter: Ø 10- 300 mm, height: 0-90 mm

## CONTACT

**Satisloh AG**  
Neuhofstrasse 12  
CH - 6340 Baar  
Switzerland  
Phone: +41 (0) 41766 16 16  
Mail: info@satisloh.com

www.satisloh.com

### North America

### Europe

### Asia

### Middle & South America

**Sales**  
**Phone:** +1 262 255 6001  
**Email:** precision@satisloh.com  
**Phone:** +49 (0) 6441 912 0  
**Email:** info.de@satisloh.com  
**Phone:** +852 27 56 7654  
**Email:** info.asia@satisloh.com  
**Phone:** +55 (24) 2233 8600  
**Email:** info.latam@satisloh.com

**Service**  
**+1 800 866 5640**  
precision@satisloh.com  
+49 (0) 6441 912 555  
service.de@satisloh.com  
+852 27 56 5058  
service.asia@satisloh.com  
+55 (24) 2233 8686  
servicio.latam@satisloh.com

# satisloh®