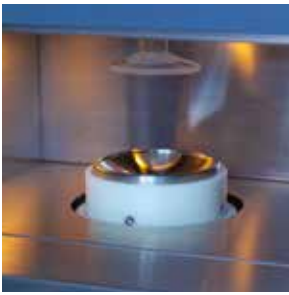
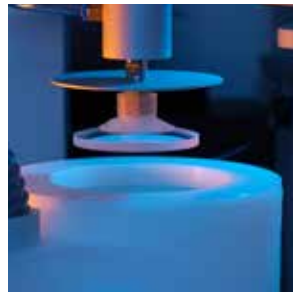


SPIN HARD COATING

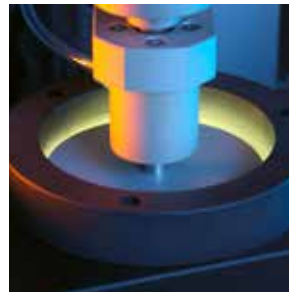
SCRATCH RESISTANCE TECHNOLOGY



Self-centering loading station



Washing station



Spin lacquer- and UV curing station

MAGNA-SPIN & MAGNA-SPIN AUTO

Satisloh's Spin Coating technology is the right choice for labs that want less complex production and a low investment with the highest process speed and the option to fully automate their hard coating process. Using solvent based, non-tintable chemistry, labs can achieve extremely high scratch-resistance.

FEATURES + BENEFITS

- Magna-Spin-Auto ideally complements Satisloh's automated ART-line, while Magna-Spin is a great match for low to mid volume production.
- Easy to handle: one piece flow, no lens batching required.
- Maintenance free, sealed lacquer container system.
- Extremely high speed due to UV curing.
- Consistent UV light intensity due to e-ballast inputs controlled by software system.
- Robust design for maximum up-time and consistently high yields.
- Magnetic driven rotation system provides low friction with less wear on motors and spin mechanism
- Self-centering lens loading station based on lens mass rather than geometry for even coating (unblocked lenses).
- Optional dosimeter for monitoring actual bulb energy
- Standard dual lacquer system automatically chooses correct lacquer based on lens material. Three-lacquer option available for Magna-Spin with solvent based chemistry.



TECHNICAL SPECIFICATIONS

	Magna-Spin Auto	Magna-Spin
Productivity	Up to 110 lenses/hour (solvent based) Up to 120 lenses/hour (all solids)	Up to 90 lenses/hour (solvent based) Up to 100 lenses/hour (all solids)
Lens compatibility	Only for lenses on Satisloh's alloy free blocks	Compatible with lenses on Satisloh's alloy free blocks or off the block
Chemistry options	Solvent based & All solids	Solvent based & All solids
Cleaning process	No touch process included	Manual pre-cleaning required
Automation	Fully	Semi-automated
Dimensions (wxdxh)	3210 x 1302 x 1808 mm / 126 x 51 x 71 inches	956 x 1100 x 1800 mm / 38 x 43 x 71 inches

All technical data subject to change without notice. Verify details with Satisloh

CONTACT

Satisloh AG
Neuhofstrasse 12
CH - 6340 Baar
Switzerland
Telephone: +41 (0) 41766 16 16
Email: info@satisloh.com

www.satisloh.com

North America

Europe

Asia

Central & South America

Sales
Telephone: +1 262 255 6001
Email: info.usa@satisloh.com
Telephone: +49 (0) 6441 912 0
Email: info.de@satisloh.com
Telephone: +852 27 56 7711
Email: info.asia@satisloh.com
Telephone: +55 (11) 2930 8600
Email: info.latam@satisloh.com

Service
+1 262 255 6001
service.usa@satisloh.com
+39 02 33 55 66 77
service.it@satisloh.com
+852 27 56 7654
service.asia@satisloh.com
+55 (11) 2930 8600 (pt)
+57 300 798 3374 (es)
service.latam@satisloh.com

satisloh®