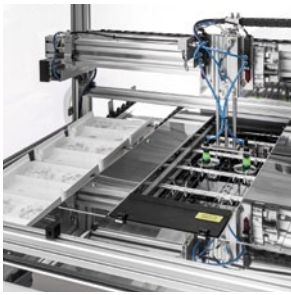


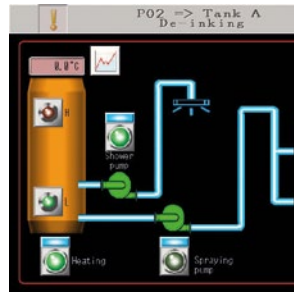


Hydra-Brush-5/Hydra-Brush-7

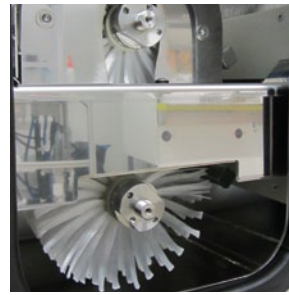
BEST-IN-CLASS BRUSH CLEANING TECHNOLOGY



Automated loading and unloading



User-friendly HMI software



Brush Cleaning

FEATURES + BENEFITS

Satisloh's automated in-line brush cleaning systems Hydra-Brush-5 and Hydra-Brush-7 are best-in-class for effectiveness, speed, reliability, and reduced consumables costs. Ideal for cleaning lenses after surfacing or finishing, they increase yield in downstream coating processes.

- Brush cleaning and high pressure rinsing cycles thoroughly remove polish residue, ink, tape or glue particles, and finger prints off all lens materials
- Effective drying with air blades. Lenses emerge clean and dry, immediately ready for coating
- In-line process fits seamlessly with automated lens production flow
- Two sizes available to best fit production needs. Both models feature stainless steel, electro-polished chambers. Hydra-Brush-5 has five chambers and Hydra-Brush-7 has seven
- High throughput: up to 500 lenses per hour (Hydra-Brush-7)
- The patented conveyor housing protects the driver chain from water and detergent. Keeping the chain dry means less maintenance and downtime, no cross contamination between chambers, and reduced detergent consumption

- Easy access to key components for simplified maintenance
- User-friendly HMI and touch screen
- Compatible with both alloy-free and traditional alloy lens production
- Green: low tap water consumption due to cascading from clean to dirty tanks
- Quiet operation
- Full compatibility with MES-360, Satisloh's manufacturing execution system

OPTIONS

- Automated lens loading and unloading
- Automated refilling of detergents and water
- OSDI 200 osmosis system for DI water production
- Ionzier at output for electrostatic charge removal
- Ticket or tray transfer system
- In-line water heater (only for Hydra-Brush-7)

TECHNICAL INFORMATION

	Hydra-Brush-7	Hydra-Brush-5
Dimensions (wxdxh)	7020 x 1520 x 1370 mm / 276 x 60 x 54 in	5200 x 1520 x 1230 mm / 205 x 60 x 48 in
Weight	1750 kg / 3858 lbs	1550 kg / 3417 lbs
Capacity	Up to 500 lenses / hour	Up to 250 lenses / hour
Cycle time (2 lenses)	~14 sec	~28 sec
Power supply	400 V / 50/60 Hz / 33 kVA	400 V / 50/60 Hz / 21 kVA
Lens materials	All organic and mineral glass lenses	All organic and mineral glass lenses

CONTACT

Satisloh AG
 Neuhofstrasse 12
 CH - 6340 Baar
 Switzerland
 Phone: +41 (0) 41766 16 16
 Email: info@satisloh.com

www.satisloh.com

North America

Europe

Asia

Latin America

Sales
Phone: +1 262 255 6001
Email: info.usa@satisloh.com
Phone: +49 (0) 6441 912 0
Email: info.de@satisloh.com
Phone: +852 27 56 7711
Email: info.asia@satisloh.com
Phone: +55 (24) 2233 8600
Email: info.latam@satisloh.com

Service
 +1 262 255 6001
 service.usa@satisloh.com
 +49 (0) 6441 912 222
 service.de@satisloh.com
 +852 27 56 7654
 service.asia@satisloh.com
 +55 (24) 2233 8686
 servicio.latam@satisloh.com

satisloh®