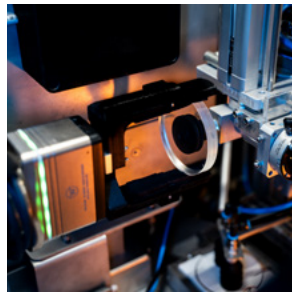


# RX-BOT LUKE

AUTOMATED UNPACKING OF SEMI-FINISHED LENSES WITH  
UNPARALLELED PRECISION



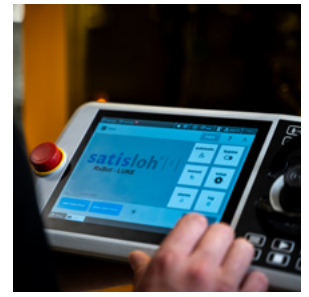
Fast & efficient lens box handling



Touch-free lens unpacking and disposal of lens boxes with & without plastic cups



Easy recycling due to automatic waste separation into independent bins



Intuitive and user-friendly mobile panel

## RX-BOT LUKE

Meet LUKE, the first of Satisloh's Rx-Bot family, specially developed to automate today's manual unpacking of semi-finished lenses. LUKE picks the semi-finished lens box from the job tray, opens the box, unpacks the lens, sorts and removes cardboard and plastic in separate bins and places the lens back into the job tray for further processing without human intervention.

## FEATURES + BENEFITS

- Automated opening and unpacking of semi-finished blanks.
- Precise and maintenance-free laser cut prevents blanks from contamination, typically found in mechanical knife cutting.
- Adaptive laser control uses a distance sensor to measure the box height and automatically regulates the laser beam focal point, consistent accurate box cutting.
- Touch-free handling process (lens front), means no scratches or fingerprints, preventing potential lens breakage downstream.
- Small footprint for easy integration in any lab.
- Fast and efficient handling of lens box packaging with and without plastic cups.
- Automatically separates 3 different waste materials (cardboard and up to two types of plastic) into independent bins, for easy recycling without contamination.
- Lens box database can be updated locally with new blanks and cutting configurations to fit your lab requirements.
- Easy to use GUI (Graphical User Interface) integrated in a mobile panel, enables labs to set up LUKE without any special computer skills.
- MES-360 Lite included.
- Remote access for full distance support.

## OPTIONS

- Upgrade to MES-360

## TECHNICAL SPECIFICATIONS

<b>Supported boxes with &amp; without plastic cups</b>	70 x 70 x 15 - 90 x 90 x 40 mm 2.75 x 2.75 x 0.59 - 3.54 x 3.54 x 1.57 in
<b>Lens handling/loading</b>	6-axis robot
<b>Dimensions (wxdxh)</b>	1000 x 1100 mm x 2200 mm 39 x 43 x 86.6 in
<b>Weight</b>	600 kg / 1323 lb



All technical data subject to change without notice. Verify details with Satisloh.

## CONTACT

**Satisloh AG**  
Neuhofstrasse 12  
CH- 6340 Baar  
Switzerland  
Phone: +41 (0) 41766 16 16  
Email: info@satisloh.com

www.satisloh.com

### North America

### Europe

### Asia

### Central & South America

**Sales**  
**Phone:** +1 262 255 6001  
**Email:** info.usa@satisloh.com  
**Phone:** +49 (0) 6441 912 0  
**Email:** info.de@satisloh.com  
**Phone:** +852 27 56 7711  
**Email:** info.asia@satisloh.com  
**Phone:** +55 (11) 2930 8600  
**Email:** info.latam@satisloh.com

**Service**  
**+1 262 255 6001**  
service.usa@satisloh.com  
**+49 (0) 6441 912 222**  
service.de@satisloh.com  
**+852 27 56 7654**  
service.asia@satisloh.com  
**+55 (11) 2930 8600 (pt)**  
**+57 300 798 3374 (es)**  
service.latam@satisloh.com

**satisloh**®