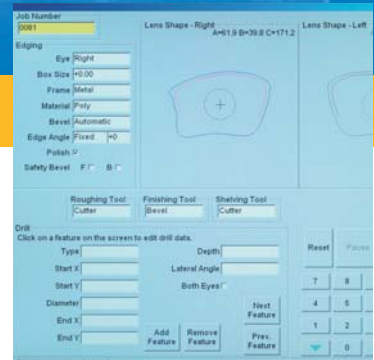




ES-curve

Industrial 5-Axis Edger



All-in-one lens machining system designed to create a new finishing profit center in your lab.

satisloh[®]



The capabilities of ES-curve allow the most complex Rx-jobs...



...including partially shelled lenses for fashionable sport frames.



Broad drilling capabilities

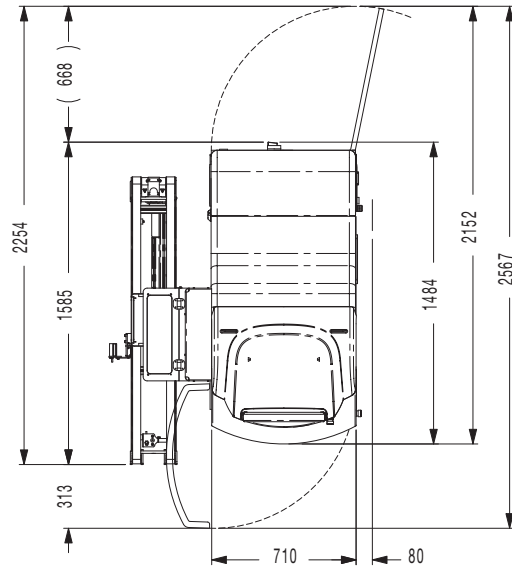


Features and Benefits:

- **Complex edging:** ES-curve's unique capabilities allow edging the most complex Rx jobs with ease and to the highest of quality standards.
- **5-Axis processing:** Based on proven technology from National Optronics, the articulating bevel, groove, and drilling process provides the best fit for even the most challenging shapes and wraps.
- **Lens milling:** Process otherwise non Rx-able lenses for difficult but fashionable sport frames.
- **Multi cutting tools:** 7 on-board tools for multi-task edging. Additional tools for complete edging capabilities can be programmed.
- **Lateral drilling:** Expands drilling capabilities with the ability to drill into the lens edge.
- **High luster polish:** Polishes flats, bevels, safety bevels and many specialty profiles with an unmatched luster quality.
- **AR edging:** Unique roughing process reduces lens stress and torque making ES-curve ideal for delicate and slippage-prone lens coatings.
- **Build new profits:** Like AR or free-form progressives, complex edging commands a premium and allows you to create a new profit center in your lab.
- **Compact design:** Small footprint is ideal for any size finishing lab. On-board vacuum system helps to minimize footprint.
- **Automation:** Improve throughput and reduce labor cost with automation; avoid work sorting due to ES-curve's full range of edging capabilities.
- Shape design software (optional) allows editing existing trace files or creating new complex designs quickly and efficiently.
- OMA/VCA compatible

Technical Information:

- **Energy requirements:**
200-480 V, 50/60 Hz,
10 A at 400 V, 6 kVA,
3 phases + N + GND
- **Air:** 85 PSI, 11 CFM
6 bar, 300 l/min
automated:
85 PSI, 14 CFM
6 bar, 400 l/min
- **Dimensions (wxdxh):**
710 x 1484 x 1832 mm/
28 x 58 x 72 inches
automated:
1321 x 1585 x 1832 mm/
52 x 62 x 72 inches
- **Weight:**
665 kg / 1465 lb
automated:
725 kg / 1600 lb
- **Working range:**
Maximum lens blank size:
95 mm (effective diameter)
Minimum finishing B size:
20,5 mm rimless; 22 mm bevel



© Satisloh / KH / November 2010
Subject to technical changes



Contact

Satisloh AG
Neuhofstrasse 12
CH - 6340 Baar
Switzerland
Phone: +41 (0) 41766 16 16
Fax: +41 (0) 41766 16 10
Mail: info@satisloh.com
www.satisloh.com

North America

Sales
Phone: +1 262 255 6001
Email: info.usa@satisloh.com

Service
Phone: +1 262 255 6001
Email: service.usa@satisloh.com

Europe

Phone: +49 (0) 6441 912 0
Email: info.de@satisloh.com

Phone: +49 (0) 6441 912 222
Email: service.de@satisloh.com

Asia

Phone: +852 27 56 7711
Email: info.asia@satisloh.com

Phone: +852 2756 7654
Email: service.asia@satisloh.com

satisloh®