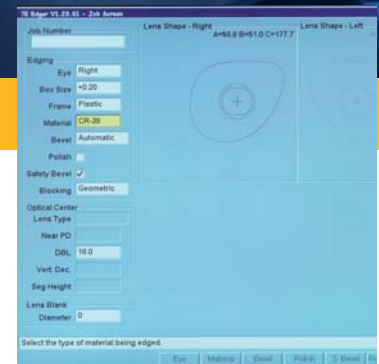


7E

Edging System



Multifunctional 3D edging system with advanced drilling, grooving and polishing capabilities.

satisloh[®]



7E's standard cutting system allows to rough, bevel, polish and groove



The multi-fluted cutter provides maximum versatility for specialty bevel profiles



Features and Benefits:

- **Versatility:** The 7E provides the widest range of functionalities and features of any table top edger in the industry. Its modular system allows configuration for each lab's individual needs.
- **High wrap and complex beveling capability:** High base lenses and complex shapes are handled proficiently with 7E's unique cutter design. The standard cutting system covers roughing, beveling, polishing, grooving and safety bevels. Easily switch to the multi-fluted cutter, which provides four different bevel geometries and can be configured with a wide variety of specialty blades.
- **Small B edging:** As a standard, 7E allows processing B measurements as low as 18 mm; the optional small B package expands B capabilities down to 16 mm while maintaining the ability to edge a full range of lenses.
- **Advanced clamping:** The electric clamping system minimizes slippage and crazing with controlled clamping forces.
- **Green technology:** Environmentally friendly dry-cut technology eliminates water consumption and coolants without sacrificing product quality.
- **On-screen assist:** The 7E features real-time process control. Integrated, intelligent software provides directional assistance for the operator. Access on-screen operations, maintenance and parts manuals with the touch of a button.

Options

- **Precise drilling:** Take advantage of the 7E's cost effective, versatile drilling option. Easily retrieve drill data from a large pre-programmed database of manufacturers' specifications or input new ones.
- **Hi-Luster polish assembly:** Provides a premium, high luster finish on all plastic, high index, Trivex, and polycarbonate lenses.
- **Nu-Groove assembly:** Latest grooving technology that provides beautiful, clean grooves on any lens shape, particularly sharp cornered or small eyed lenses.

Technical Information:

- **Power:** 115-230 V, 50/60 Hz, 1500 W; dedicated circuit
- **Dimensions (wxdxh):** 643 x 579 x 729 mm / 25.3 x 22.8 x 28.7 inches
- **Weight:** 61 kg / 135 lbs
- **Working range:**
 - All organic lens materials
 - Maximum lens blank size: 100 mm (effective diameter)
 - Minimum finished B size (standard) ½ eye clamp and chuck: 18 mm rimless, 20 mm bevel
 - Minimum finished B size with optional reduced clamping assembly: 16 mm rimless; 18 mm bevel
- **Included accessories:** 7E comes complete with vacuum system and accessory kit
- **Communication:** OMA/VCA interface or stand alone

Contact

Satisloh AG
Neuhofstrasse 12
CH - 6340 Baar
Switzerland
Phone: +41 (0) 41766 16 16
Fax: +41 (0) 41766 16 10
Mail: info@satisloh.com

www.satisloh.com

North America

Sales
Phone: +1 262 255 6001
Email: info.usa@satisloh.com

Service
Phone: +1 262 255 6001
Email: service.usa@satisloh.com

Europe

Phone: +49 (0) 6441 912 0
Email: info.de@satisloh.com

Phone: +49 (0) 6441 912 222
Email: service.de@satisloh.com

Asia

Phone: +852 27 56 7711
Email: info.asia@satisloh.com

Phone: +852 2756 7654
Email: service.asia@satisloh.com

satisloh®

