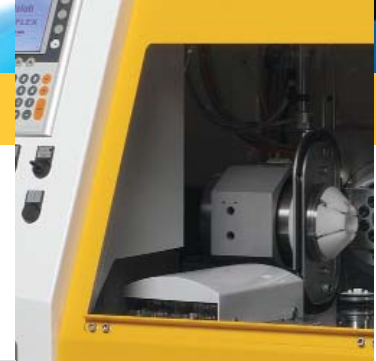




Auto-FLEX

Automated soft tool polishing system
for all lens formats: toric, spheric
and free-form surfaces



High form accuracy and long life time of soft tools.
Fully automated polishing system with large tool magazine
and lens washing station.

satisloh

Auto-FLEX eliminates thousands of tools and associated labor.



Auto-FLEX

soft tool polishing system for All-Format lens surfaces

Auto-FLEX is a fully automated, CNC controlled polishing system providing outstanding performance in terms of form accuracy, surface quality and economics.

The Auto-FLEX has been designed for heavy duty automated production lines in conjunction with Satisloh VFT generators. The Auto-FLEX is loading lenses out of job trays from a conveyor belt. Before putting polished lenses back into the tray they are pre-cleaned and dried in a washing station. A large tool magazine keeps Auto-FLEX running for many hours without operator intervention.

All lens formats and all presently known orga-

nic materials can be processed. The polishing process is based on Satisloh's soft tool technology. Different polishing processes are available targeting different customer needs. The system allows for automatic switching between different process set ups, for instance one process is optimized for shape accuracy on free-form system while the other process is tuned to high speed and low cost performance.

Features

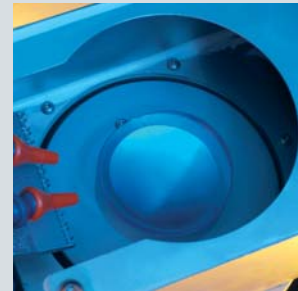
- Fully automated CNC controlled polishing system utilizing Satisloh's long life "curvature-optimized" soft tools
- Gripper handling avoids touching polished lens surfaces
- Automatically washes lenses after polishing and dries before lenses are loaded back into job tray
- Tool management software selects appropriate polishing tool and automatically ejects worn-out tools.
- Macro controlled polishing process depending on lens data and curvature information
- Multiple polishing processes available for different customer needs
- Polishes concave, spheric, toric, free-form surfaces, all presently known organic materials
- The perfect complement to Satisloh's VFT generators for automatic lens generation

Benefits

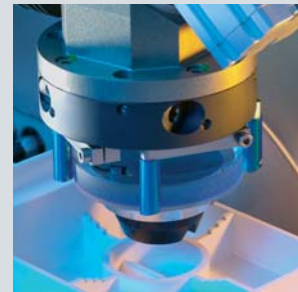
- Saves labor costs, increases efficiency in the lab by automatic operation and long life soft tools
- High process security through encoded clamping system, ensures proper tool selection
- Small footprint of only 1327 x 1410 mm / 52 x 55 inches
- Fast return on investment by process automation & elimination of hard lap tools and associated labor cost
- Continuous operation ensured by large integrated tool storage - up to 168 polishing tools (28 slots x 6 each)
- Mixed mode operation: allows for automatic selection of different processes each optimized for a different purpose



Auto-FLEX polishes lenses with soft tools



Washing station automatically pre-cleans and dries after polishing



High yields, no lens damage: 4-finger gripper takes lens without touching the polished and pre-cleaned surface



Auto-FLEX ejects used tools due to exceeded tool life

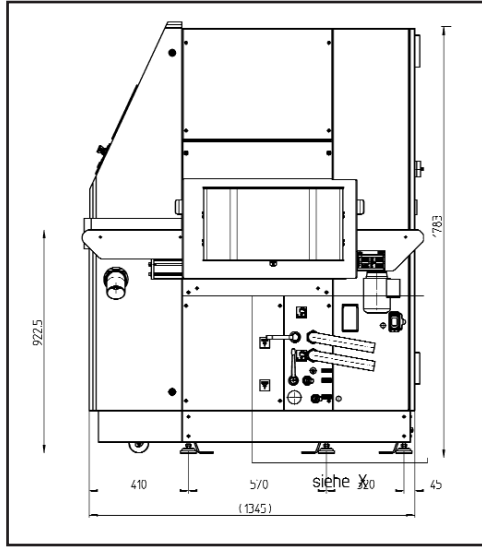
Auto-FLEX

Technical Information:

Dimensions & Weight:

Dimensions (w x d x h) :
1327 x 1410 x 1783 mm / 52 x 55 x 70 inches;
incl. conveyor
Conveyor belt height: 922 mm / 3.5 inches

Weight:
Approx. 800 kg / 1760 lb



Energy Requirements:

400 V, 3 phase, 4 kW, 16 A optional
Step-up transformer 208 V / 400 V
Compressed air:
Approx. 75 l/min, 6 bar
Tap water: approx. 20 l/h

Tool Concept:

Multi-use hard base caps with soft sandwich layers

Tool Reception:

Proprietary interface for fast and secure tool exchange

Working Range for Standard Process (n=1.523)

- Base curve convex / concave:
0 – 14.5 dpt
(strongest meridian: 14.5 dpt)
- Add. power (progressive lenses):
0 - 3.5 dpt
Lens diameter: 50 – 85 mm
Lens reception: Satisloh blocking chuck

Interfaces:

VCA protocol RS232 or TCP/IP with Satisloh Data Communication Standard

Options & Accessories:

- Pmatic-10/16 slurry system or 40 l slurry tank
- Remote diagnostics of control computer via LAN
- i-FLEX-Server software for data administration
- Consumables package
- Enhanced polishing processes

Contact

Satisloh AG
Neuhofstrasse 12
CH - 6340 Baar
Switzerland
Phone: +41 (0)41 766 16 16
Fax: +41 (0)41 766 16 10
Mail: info@satisloh.com

www.satisloh.com

North America

Phone: +1 262 255 6001
Email: info.usa@satisloh.com

Europe

Phone: +49 (0) 6441 912 0
Email: info.de@satisloh.com

Asia

Phone: +852 27 56 7711
Email: info.asia@satisloh.com

Sale

Phone: +1 262 255 6001
Email: info.usa@satisloh.com

Service

Phone: +1 262 255 6001
Email: service.usa@satisloh.com

Phone: +49 (0) 6441 912 222
Email: service.de@satisloh.com

Phone: +852 27 56 7654
Email: service.asia@satisloh.com

satisloh

