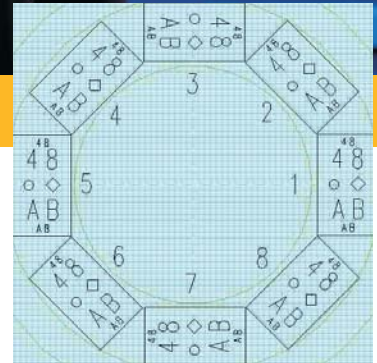


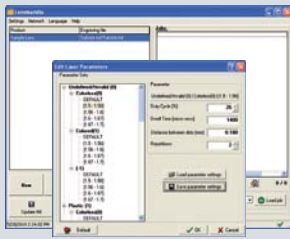
Lens-Engraver-LC

Laser Marking

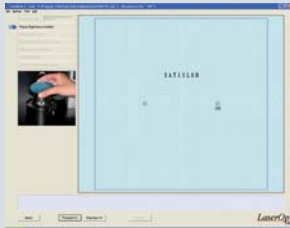


Low operating costs, easy to use, precise marking of free form lenses, processes all organic lens materials.

satisloh[®]



Satisloh LensMark RX interface software



Operation screen of laser

Features:

- CO₂ laser engraver especially for semi-visible and visible markings on free-form/progressive lenses
- Engraves micro circles, characters, logos (dxf or dwg) and geometric shapes on all organic lens materials, convex and concave
- Engraved lenses can be hard-, AR coated and tinted
- Accepts Satisloh blocking chucks
- Power adjustment kit maintains quality and visibility of engravings
- Availability:
 - stand-alone version (manual)
 - desk-top version (manual)
 - automatic version (automated loading/unloading)
- Automatically focuses on z-height utilizing topographic lens data transmitted via data interface from suitable server systems (e.g. Satisloh's RX-Server-AF)
- Highest consistency of engraving quality and visibility among available CO₂ laser-based engravers
- Integrates with Satisloh's free-form solution, communicates with RX-Server-AF – LensMark RX via TCP/IP
- Open data communication interface
- Protocols: VCA (OMA) via RS232 or ethernet LDCS using Satisloh LensMark RX software
- Optimized process through material specific engraving parameters
- Job numbers readable from paper tickets, bar-coded trays or RFID

Benefits:

- Low operating costs and costs per lens since virtually consumable free processing and minimal maintenance needed
- Short process time
- Manual system upgradable to automated loading/unloading system
- High quality, reproducible results
- High reliability and yield
- Small foot print
- Continuous operation, long lifetime laser source
- Safe system, secure operation - requires no protective eyewear for operator
- Sealed CO₂ laser source, requires no gas installation
- User friendly software for operation, calibration, control and graphical layout design
- Fixed or variable engraving objects

Technical Information:

Materials:

all organic lens material like CR39, high index material, Trivex and polycarbonate

Working Range:

convex and concave engravings anywhere on the lens up to 80 mm diameter

Lens Reception:

Satisloh blocking chucks

Included: PC based on a Microsoft Windows™ operating system

Laser: sealed off CO₂ laser class I

Wave Length: 10200 - 10800 nm

Electric Energy Requirements:

230 V/6 A or 110 V/12 A, 50/60 Hz
air cooling (exhaust required)

Dimensions and Weight (w x d x h):

Desk-top

515 x 1340 x 827 mm / 20 x 52 x 32 inches
210 kg / 463 lbs

Stand-alone

1056 x 1347 x 1322 mm / 41 x 53 x 52 inches
316 kg / 697 lbs

Automated

1188 x 1661 x 1387 mm / 46 x 65 x 54 inches
400 kg / 882 lbs



Contact

Satisloh AG
Neuhofstrasse 12
CH - 6340 Baar
Switzerland
Phone: +41 (0) 41766 16 16
Fax: +41 (0) 41766 16 10
Mail: info@satisloh.com

www.satisloh.com

North America

Sales
Phone: +1 262 255 6001
Email: info.usa@satisloh.com

Service
Phone: +1 262 255 6001
Email: service.usa@satisloh.com

Europe

Phone: +49 (0) 6441 912 0
Email: info.de@satisloh.com

Phone: +49 (0) 6441 912 222
Email: service.de@satisloh.com

Asia

Phone: +852 27 56 7711
Email: info.asia@satisloh.com

Phone: +852 27 56 7654
Email: service.asia@satisloh.com

satisloh®

