



Box Coater

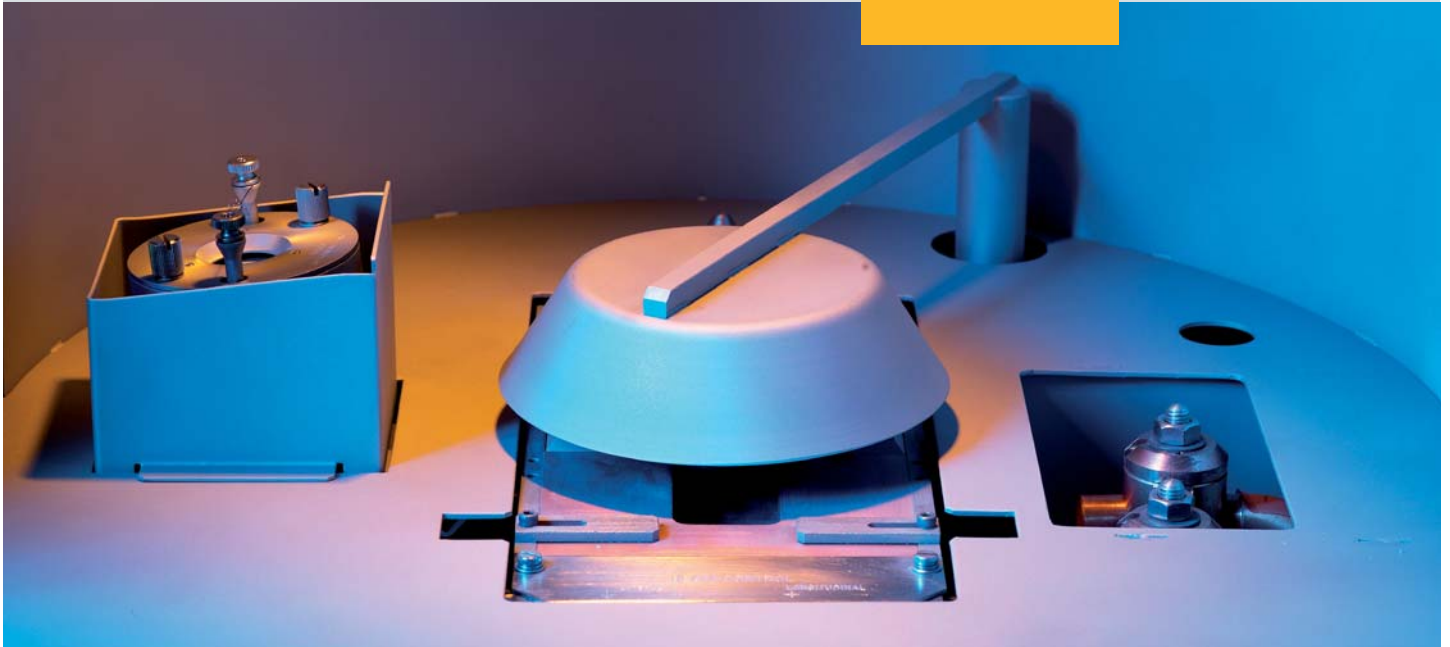
MC-380-X/MC-Lab-380-X

Turn-key AR coating

Consistent, uniform AR coatings, proven Satisloh AR and mirror processes, reduced process times due to our patented flip-over system.

satisloh[®]

Consistent AR coatings, proven Satisloh AR and mirror processes, reduced process times.



MC-380-X / MC-Lab-380-X Vacuum box coating system / Turn-key coating system

The MC-380-X represents the evolution of the well known MC-380-H. Thanks to newly developed coating processes, it provides sophisticated and even faster AR coatings.

The MC-380-X, a stand alone AR box coater, that, when combined with an ultrasonic cleaning system, is a complete coating solution. It provides consistent, sophisticated AR coatings in short process times with an easy process setup.

Satisloh specializes in turn-key systems, including such auxiliary equipment as ultrasonic cleaning systems and dipcoating lacquering systems. All are supported with comprehensive training and service programs with 8 service sites on 4 continents.

Application

The MC-380-X box coater deposits anti-reflective (AR) and / or mirror coatings on organic and mineral glass lenses via thermal evaporation process (PVD). It offers multiple process applications and is built for highest throughput requirements in Rx-Labs.

Process

Satisloh engineered a new, exclusive process generation, available only for the MC-380-X, that increases productivity up to 30% (*).

Coating processes are the key to success. Satisloh is experienced in the full process chain and offers a wide range of proven and easy to setup AR and mirror processes dedicated to lens material and coating quality requirements. Because of machine configuration and consumables knowledge, lens quality is uniform within a batch and from batch to batch.

MC-380-X processes:

- Ioncote $\kappa+$ X (**)
- Ioncote κ X
- Performance X
- Multiquartz X
- Spectraflex X

In all processes the ion gun is used as an innovative layer, to enhance adhesion of coatings with substrates and also during the deposition with a more precise parameter set.

(*) percentage vary according to selected process and lens holder configuration

(**) only available together with Satisloh lacquers DT/DN1500 and DN1601

Benefits

- Consistent (uniform) AR coatings
- Proven Satisloh AR and mirror processes
- Reduced process times due to newly developed X-generation processes
- Easy job and process set-up and change
- User-friendly control software
- High Rx lab productivity
- Medium batch size

For MC-Lab version only

- Increased efficiency due to the integration of ultrasonic cleaning and preparation and degassing facilities
- Two or more MC-Lab-380-X can be arranged in parallel configuration, sharing the ultrasonic system
- Small footprint

Features

- Hot processes (300°C) for mineral glass lenses (requires heater option)
- 3-sector dome or a flip-over system for double-side processing
- Easy and fast swap from dome to flip-over lens holder
- Ion-assisted deposition
- Electron beam gun with a shutter
- Pump system with a powerful molecular turbo pump 1900 l/s
- Touch screen operator terminal

For MC-Lab version only

- Fully automated lens cleaning, including basket transportation
- 6 tanks, cleaning and rinsing under a flow box
- "Slow lift-out" for lens drying
- Degassing oven



Electron beam gun



IG head „Mark I“



Easy to operate with a user-friendly touch screen



Double hard disc RAID 1



Vacuum chamber

MC-380-X / MC-Lab-380-X

Technical Information:

Lens Specification

- CR 39
- Polycarbonate
- High index
- Acrylic
- Photo chromic
- Mineral glass up to $n = 1.9$

	Diameter	No. of lenses
3-sector dome		
	Ø 51 mm	120
	Ø 66 mm	72
	Ø 72 mm	60
	Ø 75 mm	57
	Ø 80 mm	45
Flip-over		
	Ø 65 mm	42
	Ø 70 mm	42
	Ø 75 mm	35

Utilities & Space

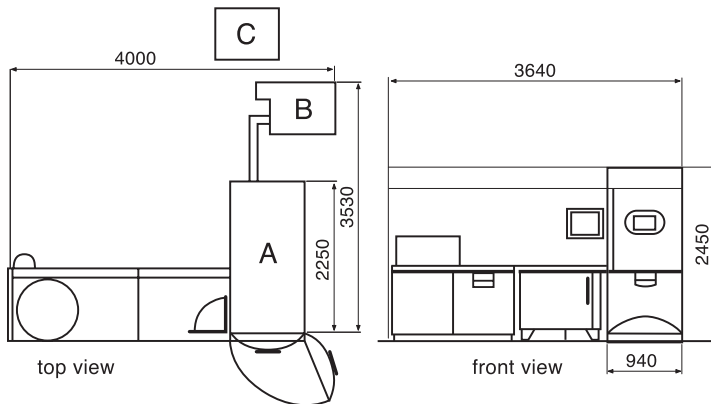
MC-380-X

Vacuum chamber assembly		
(incl. electrical cabinet)	1000 kg	2205 kg
Water thermo conditioner	60 kg	132 kg
Preliminary vacuum pump	73 kg	161 kg
CC-10-S cascade cooler	408 kg	899.5 kg
GCC-9 water chiller	130 kg	286 kg
Transformer	320 kg	705.5 kg

- Electrical power: 15 kVA
- Dimensions (w x d x h):
940 x 2250 x 2450 mm / 37 x 89 x 96 inches
- Compressed air: 6 bar
- Gas purity: Ar, N₂, O₂ min. 99.99

MC-Lab-380-X

- Dimensions (w x d x h):
4000 x 3530 x 2450 mm /
157 x 139 x 96 inches



- A MC-380-X including a water thermo conditioner
- B CC-10-S cascade cooler
- C GCC-9 water chiller

Accessories & Options:

- 3-sector dome
- Flip-over system
- Consumables

Contact

Satisloh AG
Neuhofstrasse 12
CH - 6340 Baar
Switzerland
Phone: +41 (0) 41766 16 16
Fax: +41 (0) 41766 16 10
Mail: info@satisloh.com

www.satisloh.com

North America

Phone: +1 262 255 6001
Email: info.usa@satisloh.com

Europe

Phone: +49 (0) 6441 912 0
Email: info.de@satisloh.com

Asia

Phone: +852 27 56 7711
Email: info.asia@satisloh.com

Service

+1 262 255 6001
service.usa@satisloh.com

+39 02 33 55 66 77
service.it@satisloh.com

+852 2756 7654
service.asia@satisloh.com

satisloh®

