



SP-200

Extremely fast and flexible
sputter coater

SP-200
fast, flexible and compact sputter
coater, easy operation and maintenance,
provides highest quality coatings.



SP-200 extremely fast and flexible sputter coater, multiple process possibilities

The SP-200 is the ideal sputter coater for AR market entry, small volume continuous flow coating, and rush orders.

Main features

- Small footprint: approx. 1 m² / 10.7 ft² only (excl. external cooler)
- Highest coating quality for AR and mirrors on organic and mineral glass lenses
- Fast cycle time: approx. 20 minutes for 4 lenses double-side coated
- Lens flip-over system for automated double-side coating
- Accommodates 4 lenses of Ø 50 to 75 mm (flip-over)
- Low investment and running costs
- Automated online report and diagnosis via internet
- Easy to use, low maintenance with single source reactive sputtering
- Load lock system for short pump time and target protection
- Low production cost through only one target

Processes the following lens materials

- CR39
- Polycarbonate
- High Index
- Photochromic
- Mineral glass up to n = 1.9

Available multilayer processes

- EASY-COAT PLASTIC AR process
- EASY-COAT MINERAL AR process
- EASY-COAT MIRROR process (for sunglasses)

Separate hydrophobic unit Top-8

- Aulon hydrophobic process
- Mirage super hydrophobic and oleophobic process

Consistent, uniform AR coatings

achieved with

- Precise process control system
- Planetary lens holding systems for double-side or single-side coating

Easy job set-up and change

- User friendly input of parameters
- Easy to use with graphical touch screen
- Plug 'n' coat
- Automated reporting via internet (option)

Flexible Rx production

- Especially suited for small batches
- Flexible time saving production: easily change between different coating types and materials.
e.g. change from AR coating organic materials to AR coating mineral lenses or to mirror coating organic materials. Simply choose a different process on the touch screen. No changes necessary.

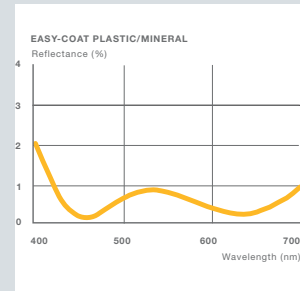
Two configurations available:

- Single-side AR system (one hour retail concept). Applies backside AR.
- Auto-Flip AR system. Applies double-side AR.

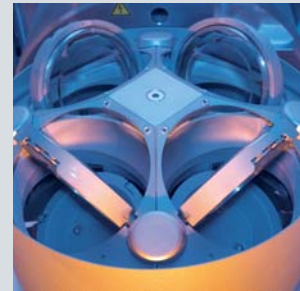
Satisloh training and service

- Comprehensive training program
- 6 service sites on 4 continents
- Lab planning

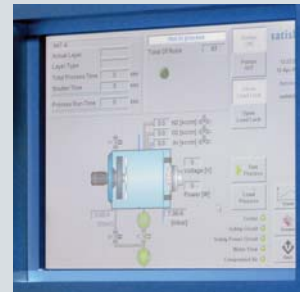
Satisloh offers a complete set of consumables for all processes.



Uniformity and reproducibility:
4-layer AR coating



Flip-over system:
automatically turns lenses
for double-side coating



Easy to use touch screen



Consistent,
uniform AR coatings

SP-200

Technical Information:

- Cycle time AR:
double-side approx. 20 min
single-side approx. 10 min
- Target diameter:
6"
- Main supply connection
3 x 400 V (or 208 V)
50/60 Hz (+/- 10%)
+ N + PE
- Max. power consumption:
5 kVA
- Planetary lens holder system for
enhanced uniformity
- Turbo pump system
- Max. Ø organic lenses
75 mm (double-side)
82 mm (single-side)
- Max. Ø mineral glass:
70 mm
- Built-in water chiller (closed unit)
- Pneumatic loading system
- Compressed air:
min. 6 bar
- Gas purity Ar (99.996%), N₂, O₂
(99.5%)

• Dimensions & Weight:

Main sputter module

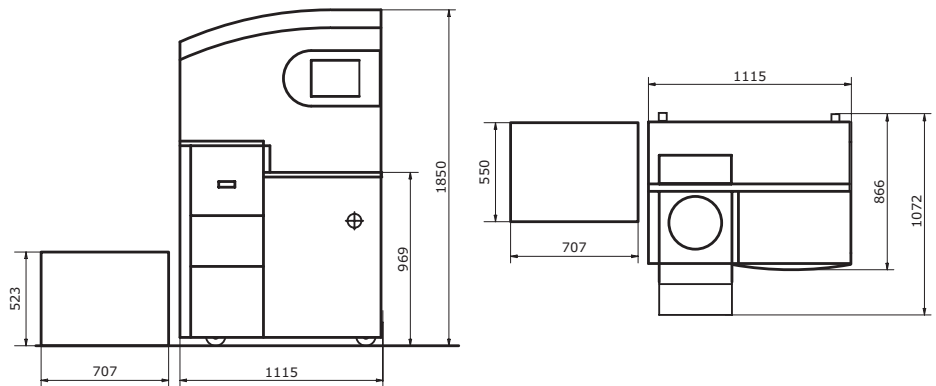
(w x d x h) 1115 x 1072 x 1850 mm
44 x 42 x 73 inches;

Total Weight:
395 kg/ 871 lb

Cooler

(w x d x h) 707 x 550 x 523 mm
28 x 22 x 21 inches

Total weight
55 kg / 121 lb



Options & Accessories:

- Automatic reporting system via
internet
- Data interface to Satisloh Rx-
Server software for job data for
lens backside correction

Contact

Satisloh AG
Neuhofstrasse 12
CH - 6340 Baar
Switzerland
Phone: +41 (0) 41766 16 16
Fax: +41 (0) 41766 16 10
Mail: info@satisloh.com

www.satisloh.com

North America

Phone: +1 262 255 6001
Email: info.usa@satisloh.com

Europe

Phone: +49 (0) 6441 912 0
Email: info.de@satisloh.com

Asia

Phone: +852 27 56 7711
Email: info.asia@satisloh.com

Service

+1 262 255 6001
service.usa@satisloh.com

+39 02 33 55 66 77
service.it@satisloh.com

+852 27 56 7711
service.asia@satisloh.com

satisloh[®]

