

## Automated Environment: Machine Log Book

In today's automated production environment it has become more important than ever to clearly document any incidents on your production equipment.

In the past, one operator was typically responsible for one or a few machines and "knew" this/these machine/s by heart. A continuing common trend is one operator responsible for a large number of machines in an automated production line. Of course, it is impossible to remember each incident precisely. Therefore it is important to clearly document each incident – either manually or electronically.

Machine Log Book Benefits:

- Tracks machine malfunctions reliably
- Helps user identify insufficient machine performance
- Suggests remedial measures, indicates affected parts and also parts correlating with this defective component
- Provides operator with valuable information for error diagnosis
- Detailed information on machine history
- Helps record and observe maintenance and service intervals

Manual machine log book example:

(Please find extra document: "**1b) Chart Machine Log Book**")

Thilo Krug  
Manager Technical Service / Precision Optics  
[Thilo.Krug@satisloh.com](mailto:Thilo.Krug@satisloh.com)

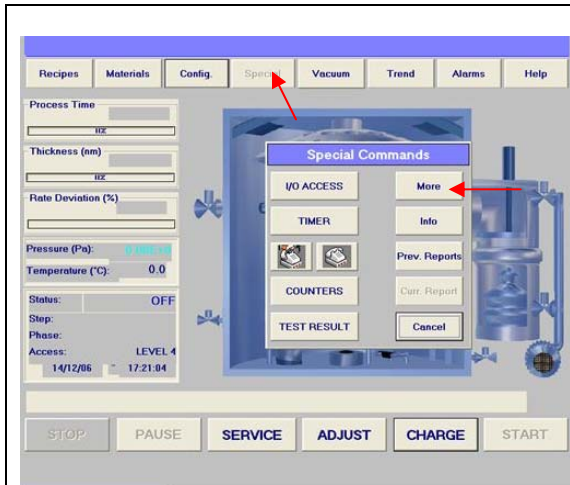
---

## Log File Software

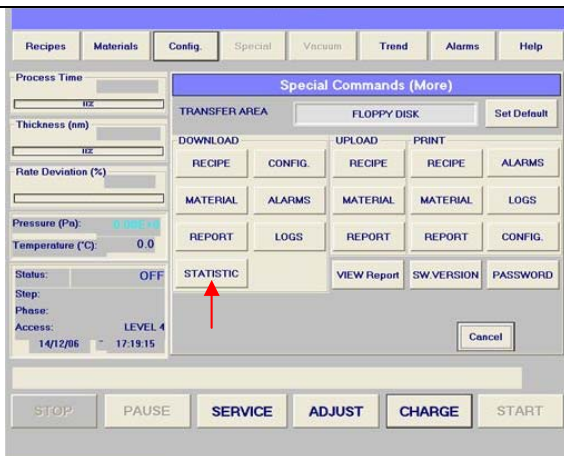
The Satisloh 9380 log file software system is user-friendly and helps greatly with operating tasks and early service diagnoses.

The user-friendly human interface is especially helpful for first-time buyers of coating systems.

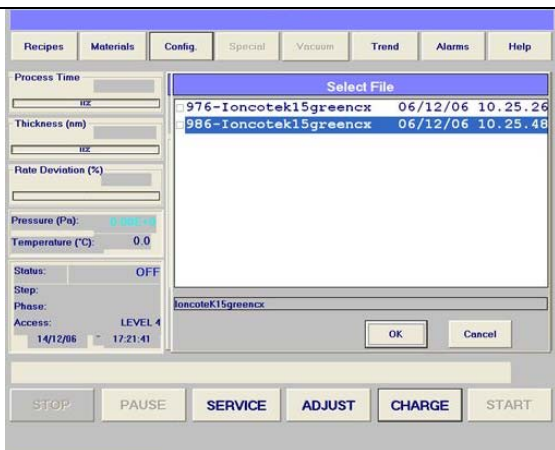




Menu "Special" leads to the "Special command" screen page which further guides to the section "life easy" for professional service diagnosis. When pressing the button "More" you get successively to the "Download/Upload/Print" screen page.



Field "Statistic" leads to the screen page to select the reports generated by the system.



The report can be easily downloaded on a floppy or in a shared area of internal net.

This software is a powerful tool for the entire production and even for the management and the entire organization, providing analyses and information about production cycles performed and registered by Satisloh Box coater plants series DLF/TLF and MC 380.

Because of this application program, the user can keep all production cycle documents in order. A simple and intuitive interface also permits analyses and comparisons of recipe/material and trend parameters of Satisloh plants.

## **OffLine9380 Program organisation**

OffLine 9380 features four main sections:

<b>Database</b>	For saved production cycle management, with search, order, display functions.
<b>Values view of events</b>	Rapid display in tabular format of values and mathematical deviations of the production cycle functional parameters. (User can verify the average value of temperature and the standard deviation, etc.)
<b>Graphics view of events</b>	Rapid display of the production cycle functional parameters.
<b>Matching function</b>	For a direct comparison between two production cycles of all setup and check parameters.

## **OffLine 9380 Program options**

### **General information**

Possible to open several production cycle files at the same time.

### **Database**

Automatic order, multiple loading, recognition of already saved production cycles, significant data preview of the cycle under examination, filters for search and order, check and database integrity recovery utilities, possibility of adding notes.

### **Values view of events**

General or detailed display of one or all cycle working phases with the main values of parameters and of process variables (average values and deviations). It also displays the general parameters of the production plant and of the performed diagnostic test. It is possible to print the values in tabular format with full particulars.

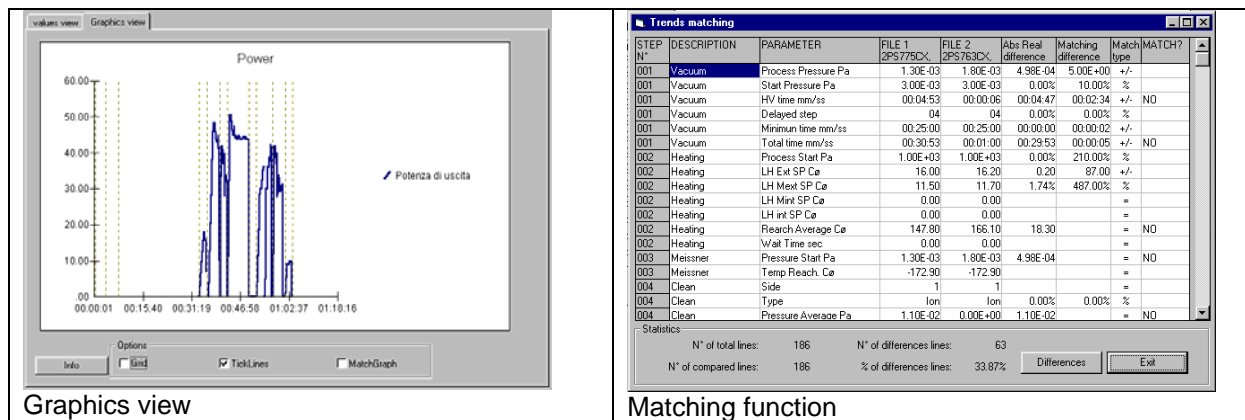
### **Graphics view of events**

General or detailed display of one or more cycle working phases; possibility of graphic display, possibility of changing the graphic scale, of displaying two graphs at the same time and of printing them.

### **Matching function**

Direct comparison between cycle values, selection of the values to be compared, matching tolerances selection, display filters.

Examples of views resulting from the above two options:



The objective of the program is to provide a powerful diagnostic instrument to service staff that can easily help troubleshoot any occurring machine problem. Reports can be analyzed by you, your production experts, or can be e-mailed to our hotline service.it@satisloh.com. Satisloh can also download the report directly from your equipment if your Satisloh coating machine is linked to a remote diagnosis system.

For further details on the Satisloh 9380 system, contact Satisloh Technical Service organization in Italy. Software training is available at our Italian Training Academy upon request (contact: Giuseppe.DiPaola@satisloh.com).

Giuseppe DiPaola  
 Manager Technical Service Coating  
[Giuseppe.DiPaola@satisloh.com](mailto:Giuseppe.DiPaola@satisloh.com)